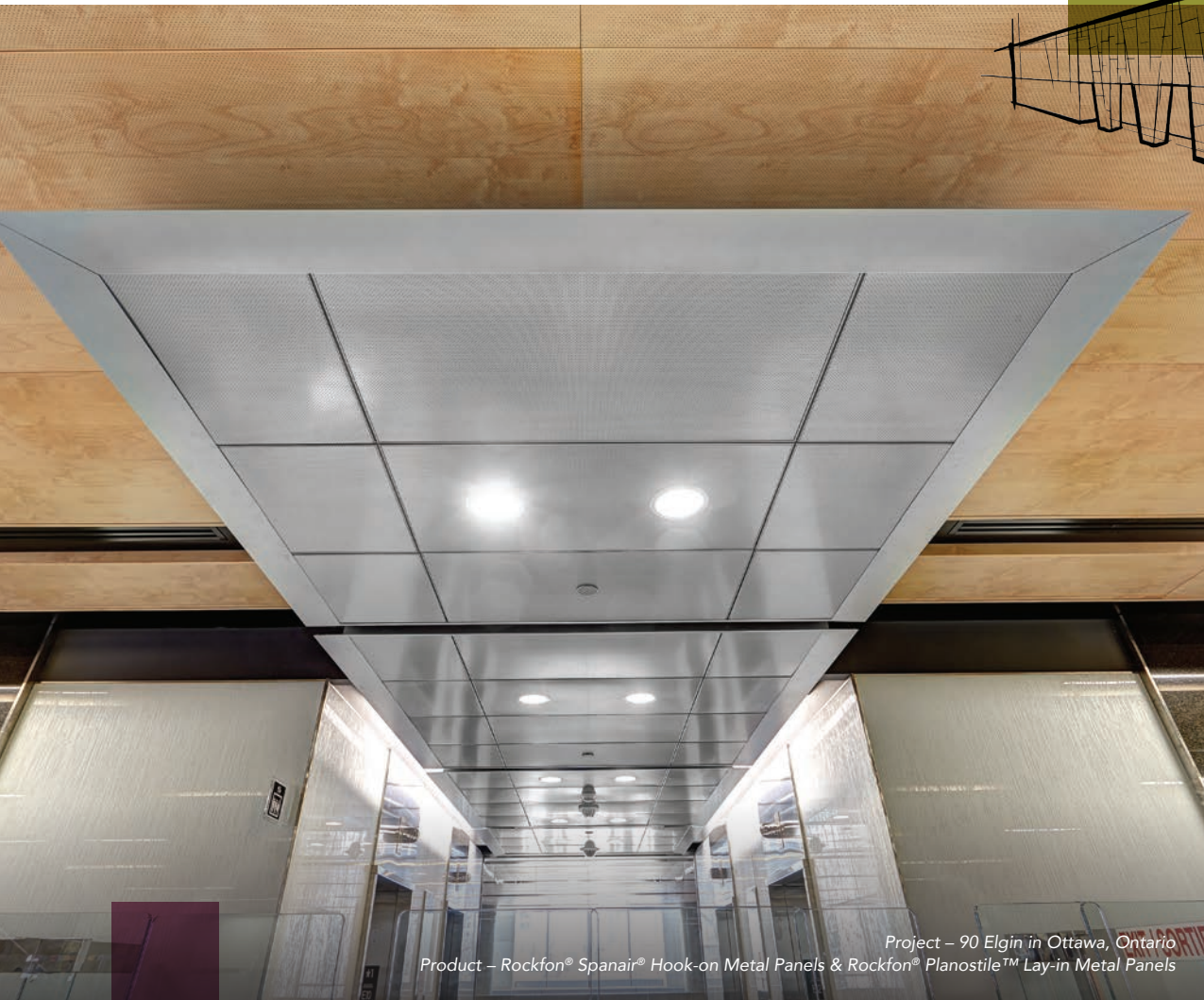
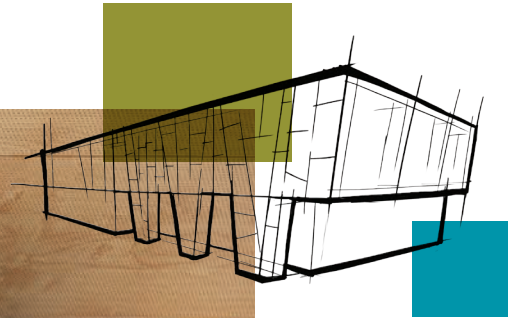


Perforation Options for Rockfon® Specialty Metal Ceilings

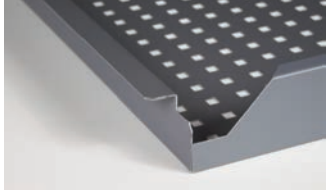
Perforation Options for Decorative,
Acoustic and Other Design Purposes



Project – 90 Elgin in Ottawa, Ontario
Product – Rockfon® Spanair® Hook-on Metal Panels & Rockfon® Planostile™ Lay-in Metal Panels

Discover Our Full Product Range of Metal Ceiling Perforation Options

Metal Planks and Panels | Pages 3–8

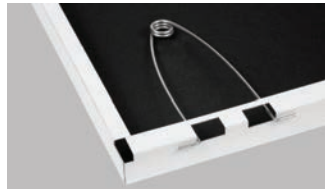


Rockfon® Spanair® Planks
(Hook-in, Hook-on, Clip-in, Torsion Spring)



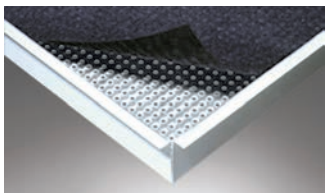
Rockfon® Planostile™ Panels
(Lay-in Square Edge, Reveal Edge, Snap-in)

Large Scale Metal Panels | Page 9



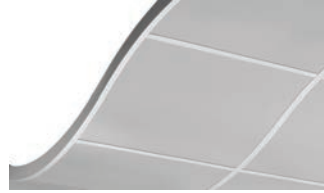
Rockfon® Spanair® Torsion Spring Plus

Multi-Dimensional Panels | Page 10



Rockfon® Planostile™ D

Curved Metal Systems | Pages 11–17

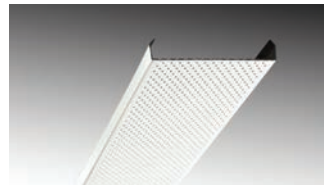


Rockfon® Curvgrid™
(1-Directional, 2-Directional)

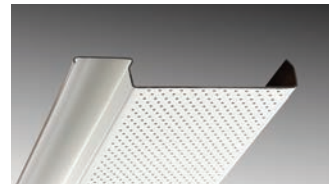


Rockfon® Curvgrid™
(EZ-flex®)

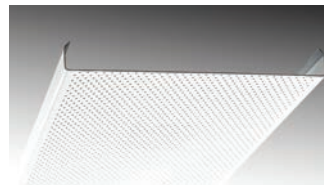
Linear Metal Panels | Page 18



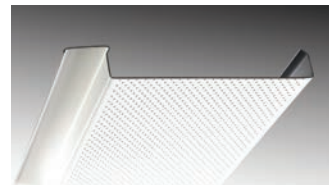
Rockfon® Planar®



Rockfon® Planar® Plus



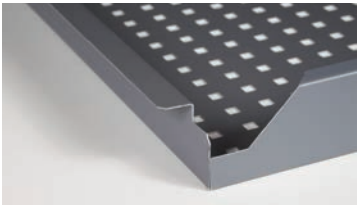
Rockfon® Planar® Macro



Rockfon® Planar® Macroplus®

Need a custom perforation?
Our Technical Services team is
here to help at ts@rockfon.com

Metal Planks and Panels



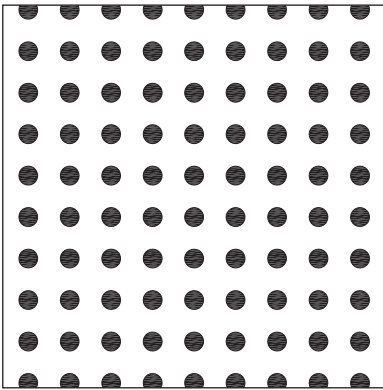
Rockfon® Spanair® Planks
(Hook-in, Hook-on, Clip-in,
Torsion Spring)



Rockfon® Planostile™ Panels
(Lay-in Square Edge,
Reveal Edge, Snap-in)

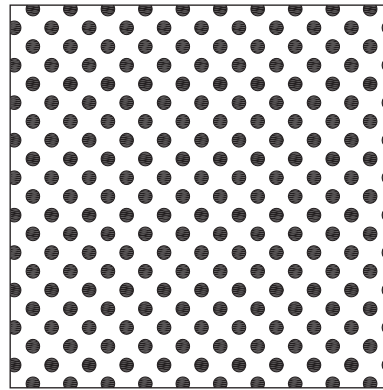
Your Perforations Selection:

Standard



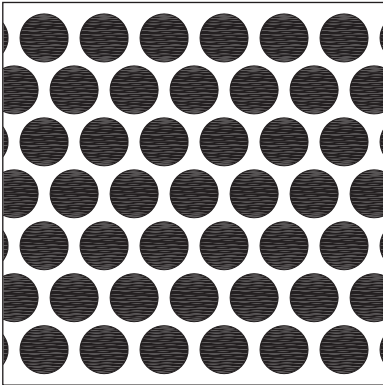
D
98R216L

0.098" Diameter holes
0.216" Straight centers
16.2% Open area



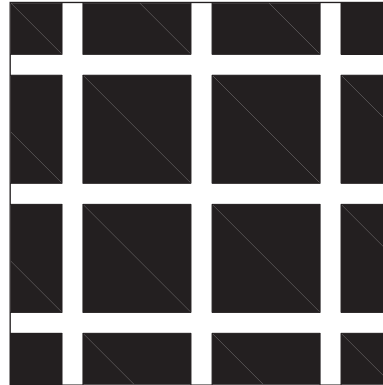
E
71R138D

0.071" Diameter holes
0.138" Diagonal centers
20.8% Open area



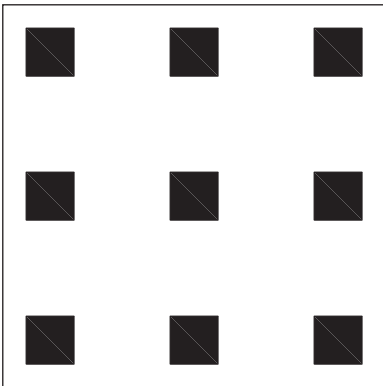
J
250R312S

0.25" Diameter holes
0.312" Staggered centers
58.2% Open area



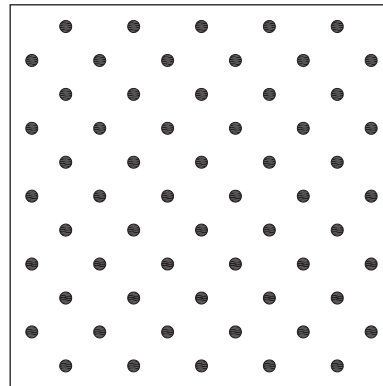
Q
562S672L

0.5625" Square holes
0.672" Straight centers
70% Open area



R
250S750L

0.25" Square holes
0.75" Straight centers
11.1% Open area

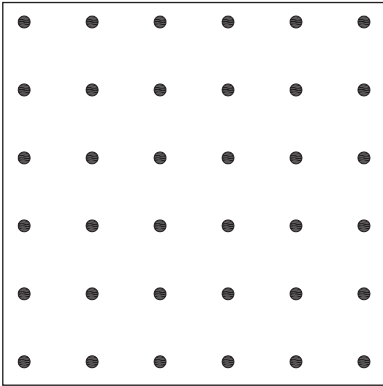


V
62R250D

0.0625" Diameter holes
0.25" Diagonal centers
4.9% Open area

Your Perforations Selection, continued:

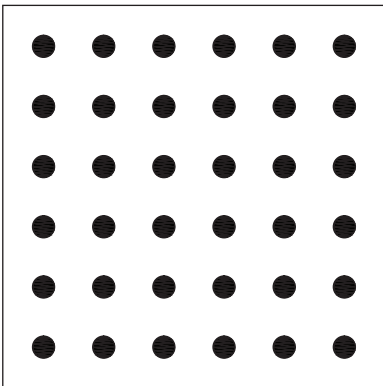
Standard



AA
62R354L

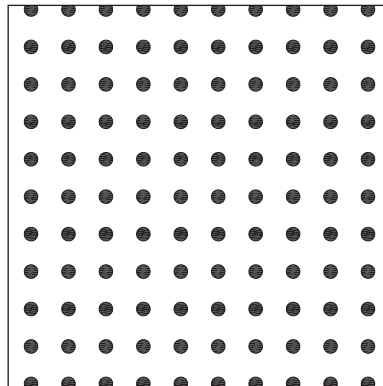
0.0625" Diameter holes
0.354" Straight centers
2.5% Open area

Premium



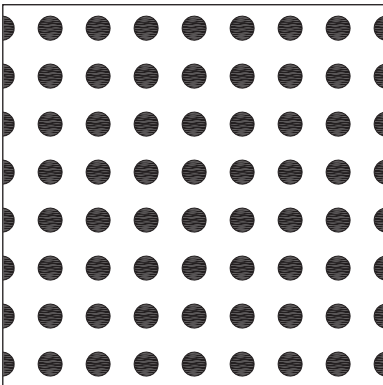
B
60R169L

0.06" Diameter holes
0.169" Straight centers
9.9% Open area



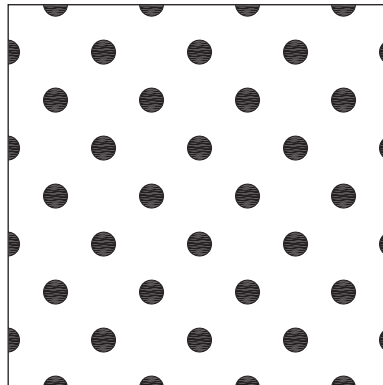
F
71R195L

0.071" Diameter holes
0.195" Straight centers
10.4% Open area



G
125R250L

0.125" Diameter holes
0.25" Straight centers
19.6% Open area

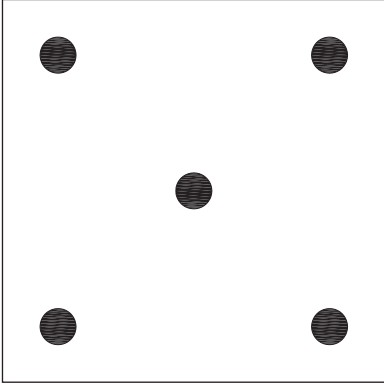


H
125R354D

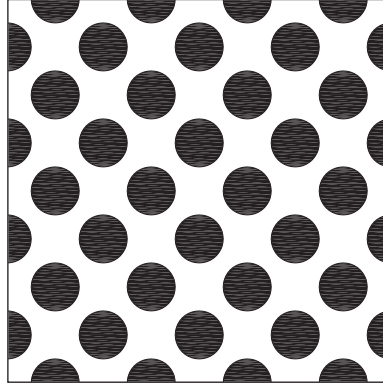
0.125" Diameter holes
0.354" Diagonal centers
9.8% Open area

Your Perforations Selection, continued:

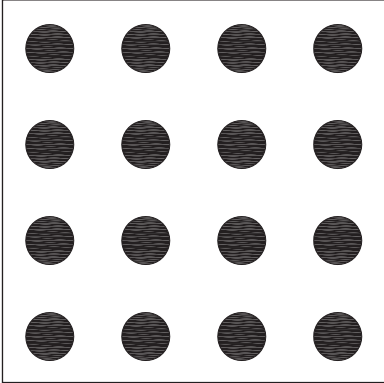
Premium



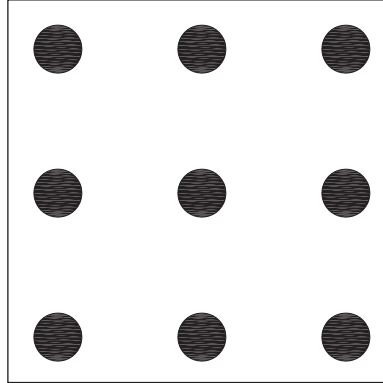
I
188R1000D
0.1875" Diameter holes
1" Diagonal centers
2.8% Open area



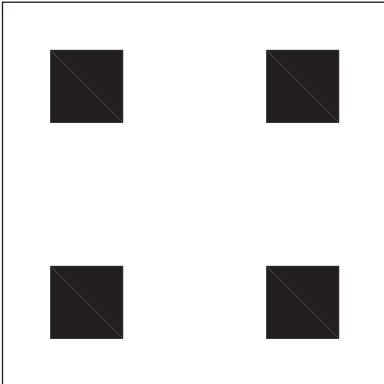
K
250R354D
0.25" Diameter holes
0.354" Diagonal centers
39% Open area



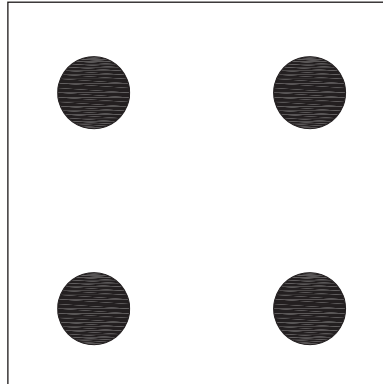
L
250R500L
0.25" Diameter holes
0.5" Straight centers
19.6% Open area



N
250R750L
0.25" Diameter holes
0.75" Straight centers
9% Open area



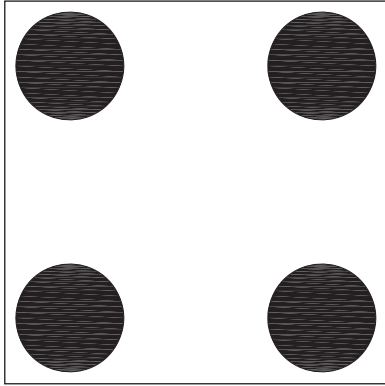
O
375S1125L
0.375" Square holes
1.125" Straight centers
11.1% Open area



P
375R1125L
0.375" Diameter holes
1.125" Straight centers
8.7% Open area

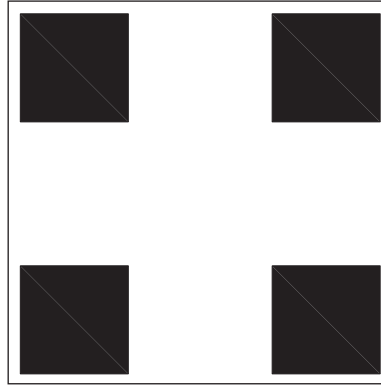
Your Perforations Selection, continued:

Premium



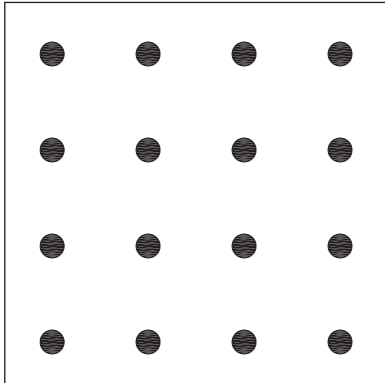
W
562R1312L

0.5625" Diameter holes
 1.3125" Straight centers
 14.4% Open area



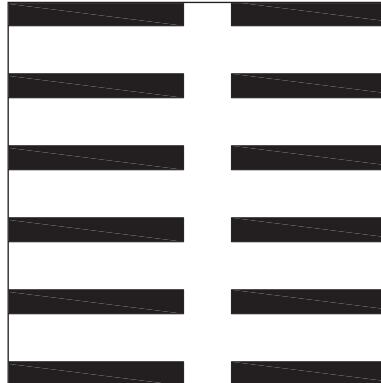
Y
562S1312L

0.5625" Square holes
 1.3125" Straight centers
 18.4% Open area



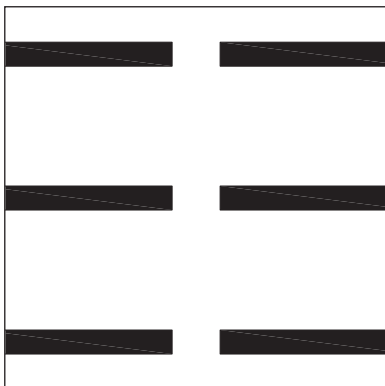
Z
125R500L

0.125" Diameter holes
 0.5" Straight centers
 4.9% Open area



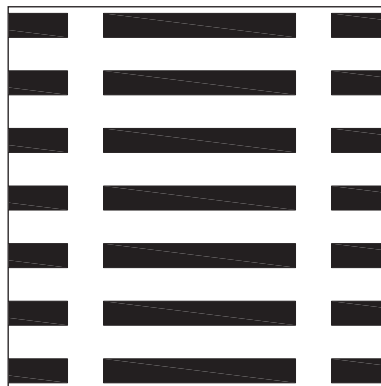
AB
125x1000X375L

0.125" x 1"
 Rectangular holes
 0.375" x 1.25"
 Straight centers
 26.6% Open area



AC
125x1000X750L

0.125" x 1"
 Rectangular holes
 0.75" x 1.25"
 Straight centers
 13.3% Open area

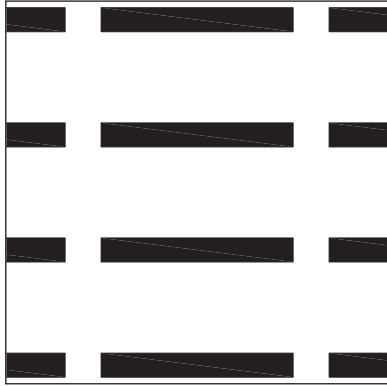


AD
125x1000X300L

0.125" x 1"
 Rectangular holes
 0.3" x 1.875"
 Straight centers
 35.1% Open area

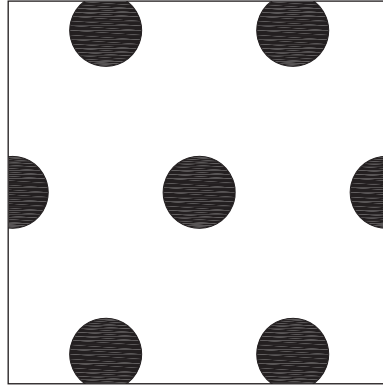
Your Perforations Selection, continued:

Premium



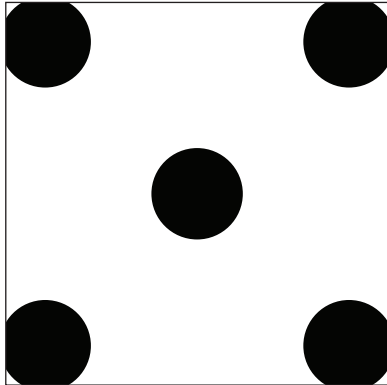
AE
125x1000X600L

0.125" x 1"
Rectangular holes
0.6" x 1.1875"
Straight centers
17.5% Open area



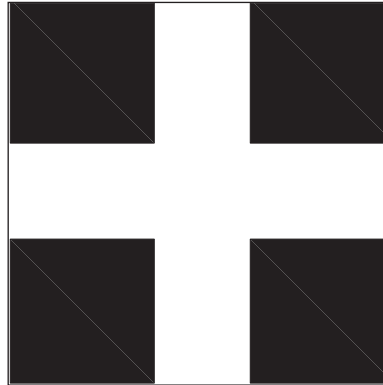
AF
375R974S

0.375" Diameter holes
0.974" Staggered centers
13.4% Open area



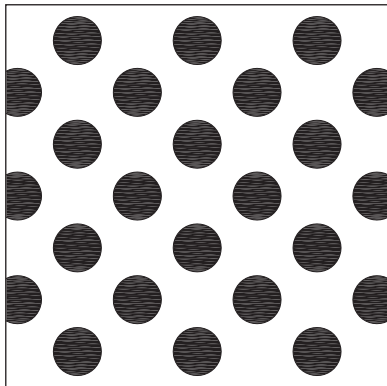
AG
312R750D

0.312" Diameter holes
0.75" Diagonal centers
13.6% Open area



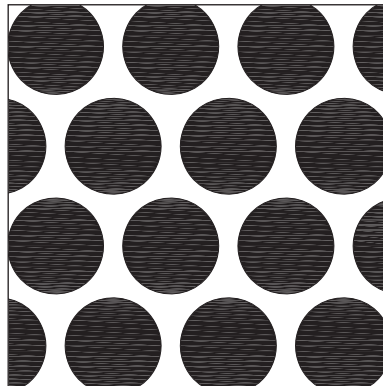
AH
750S1250L

0.75" Square holes
1.25" Straight centers
36% Open area



AI
250R413S

0.25" Diameter holes
0.413" (41°)
Staggered centers
28% Open area

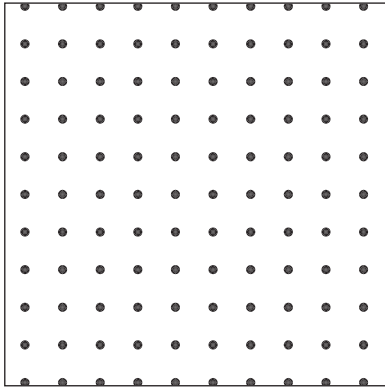


AJ
500R600S

0.5" Diameter holes
0.6" Staggered centers
63% Open area

Your Perforations Selection, continued:

Premium



AK

48R196L

- 0.048" Diameter holes
- 0.196" Diagonal centers
- 4.71% Open area

Large Scale Metal Panels

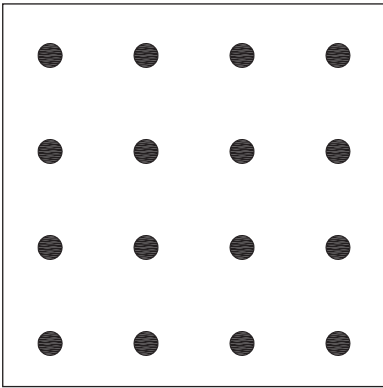


Rockfon® Spanair®
Torsion Spring Plus

Panel Widths up to 48"
Panel Lengths up to 120"

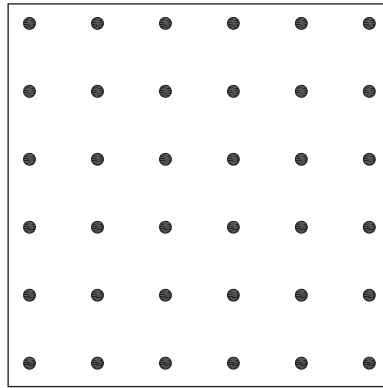
Your Perforations Selection:

Standard



Z
125R500L

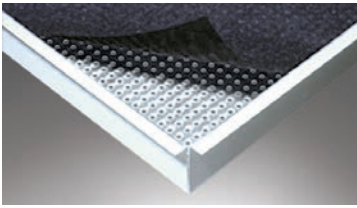
0.125" Diameter holes
0.5" Straight centers
4.9% Open area



AA
62R354L

0.0625" Diameter holes
0.354" Straight centers
2.5% Open area

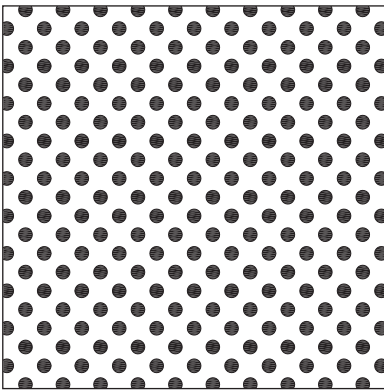
Multi-Dimensional Panels



Rockfon® Planostile™ D

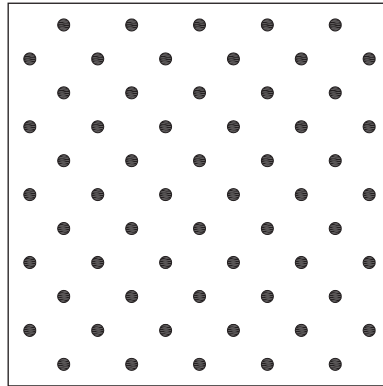
Your Perforations Selection:

Standard



E
71R138D

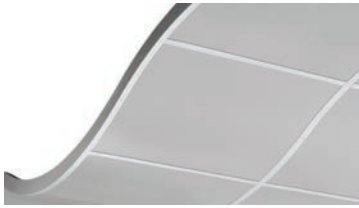
0.071" Diameter holes
0.138" Diagonal centers
20.8% Open area



V
62R250D

0.0625" Diameter holes
0.25" Diagonal centers
4.9% Open area

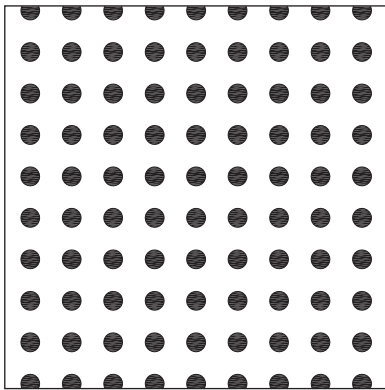
Curved Metal Systems



Rockfon® Curvgrid™
(1-Directional, 2-Directional)

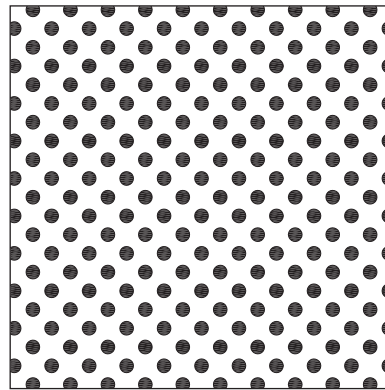
Your Perforations Selection:

Standard



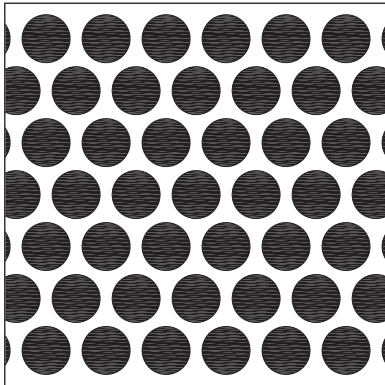
D
98R216L

0.098" Diameter holes
0.216" Straight centers
16.2% Open area



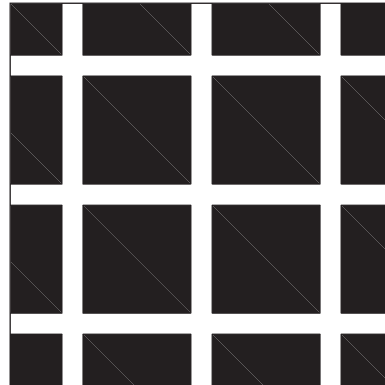
E
71R138D

0.071" Diameter holes
0.138" Diagonal centers
20.8% Open area



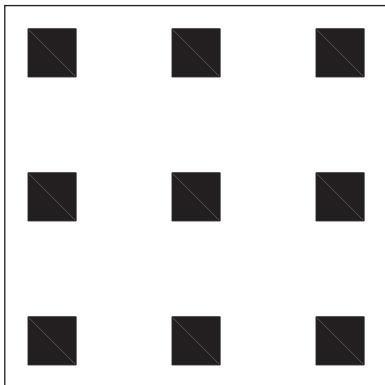
J
250R312S

0.25" Diameter holes
0.312" Staggered centers
58.2% Open area



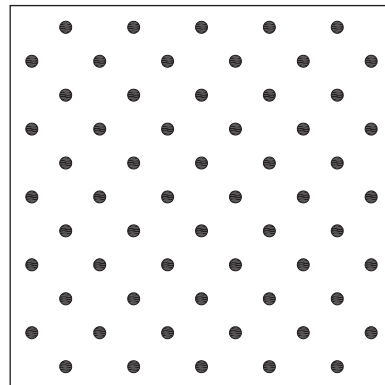
Q
562S672L

0.5625" Square holes
0.672" Straight centers
70% Open area



R
250S750L

0.25" Square holes
0.75" Straight centers
11.1% Open area

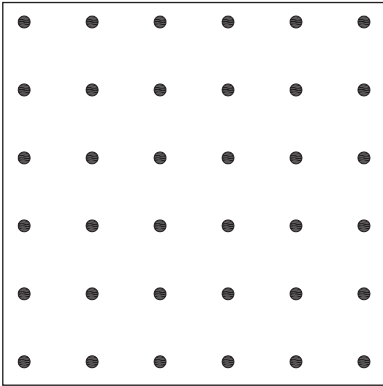


V
62R250D

0.0625" Diameter holes
0.25" Diagonal centers
4.9% Open area

Your Perforations Selection, continued:

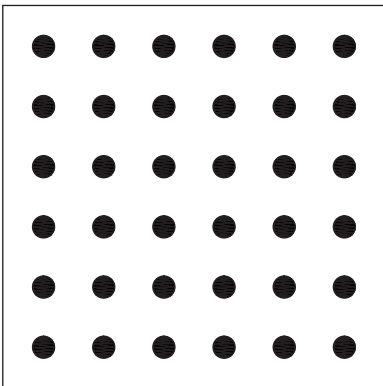
Standard



AA
62R354L

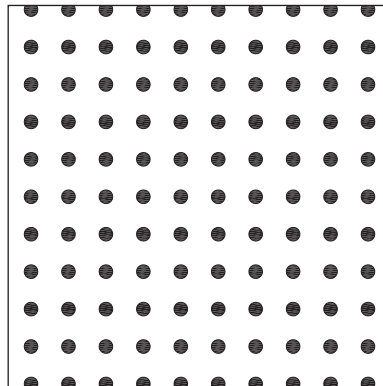
0.0625" Diameter holes
0.354" Straight centers
2.5% Open area

Premium



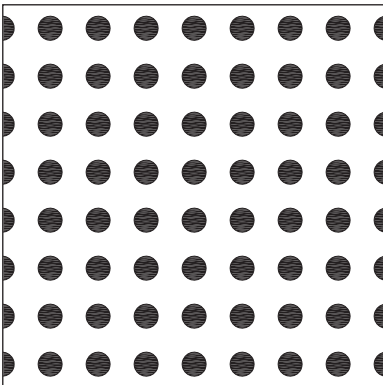
B
60R169L

0.06" Diameter holes
0.169" Straight centers
9.9% Open area



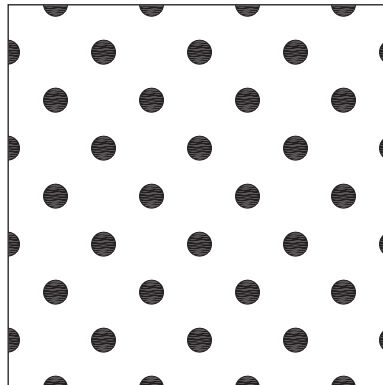
F
71R195L

0.071" Diameter holes
0.195" Straight centers
10.4% Open area



G
125R250L

0.125" Diameter holes
0.25" Straight centers
19.6% Open area

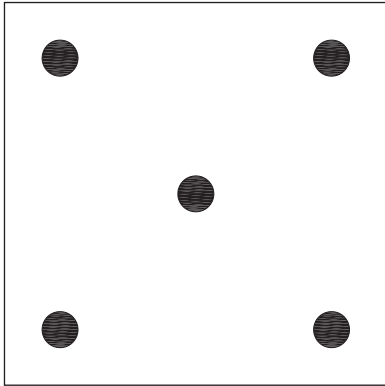


H
125R354D

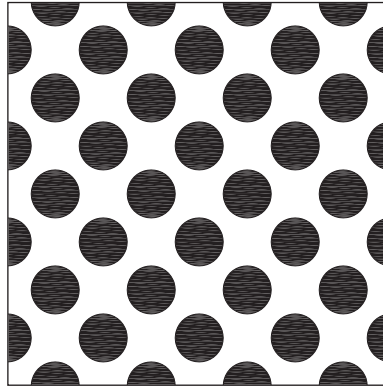
0.125" Diameter holes
0.354" Diagonal centers
9.8% Open area

Your Perforations Selection, continued:

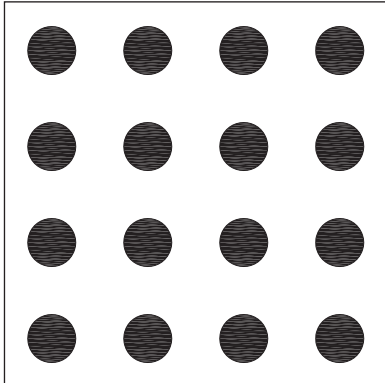
Premium



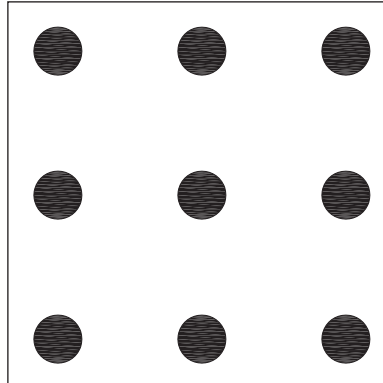
I
188R1000D
0.1875" Diameter holes
1" Diagonal centers
2.8% Open area



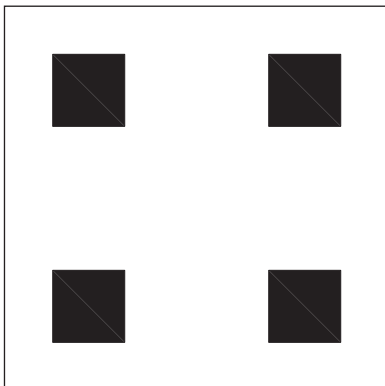
K
250R354D
0.25" Diameter holes
0.354" Diagonal centers
39% Open area



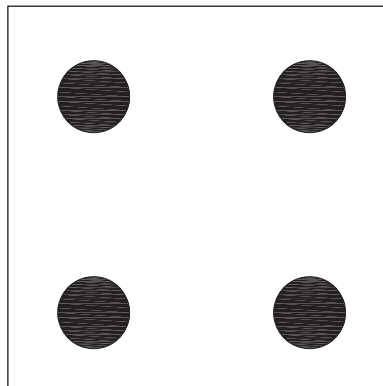
L
250R500L
0.25" Diameter holes
0.5" Straight centers
19.6% Open area



N
250R750L
0.25" Diameter holes
0.75" Straight centers
9% Open area



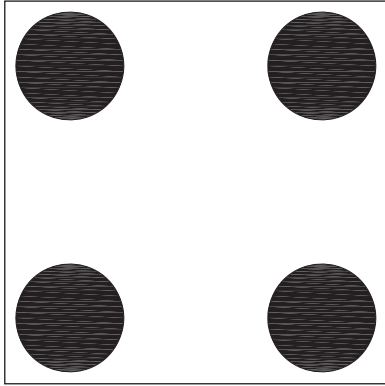
O
375S1125L
0.375" Square holes
1.125" Straight centers
11.1% Open area



P
375R1125L
0.375" Diameter holes
1.125" Straight centers
8.7% Open area

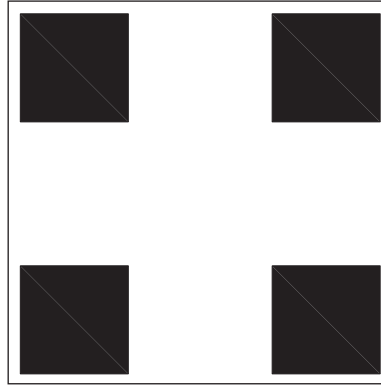
Your Perforations Selection, continued:

Premium



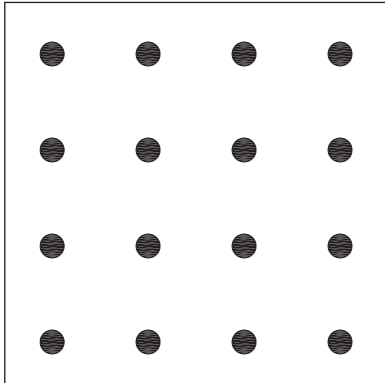
W
562R1312L

0.5625" Diameter holes
1.3125" Straight centers
14.4% Open area



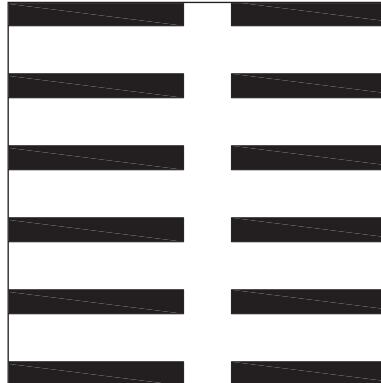
Y
562S1312L

0.5625" Square holes
1.3125" Straight centers
18.4% Open area



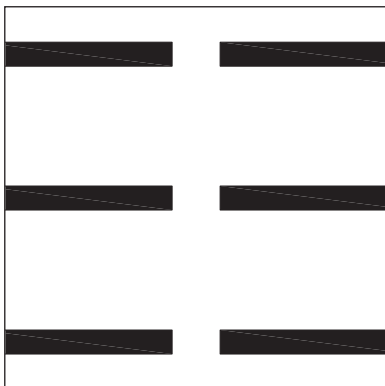
Z
125R500L

0.125" Diameter holes
0.5" Straight centers
4.9% Open area



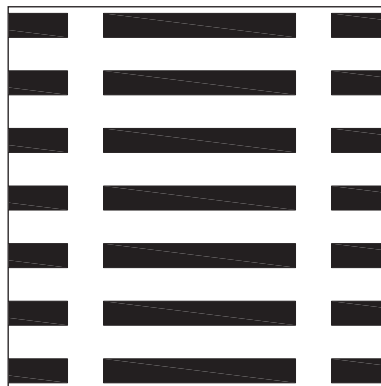
AB
125x1000X375L

0.125" x 1"
Rectangular holes
0.375" x 1.25"
Straight centers
26.6% Open area



AC
125x1000X750L

0.125" x 1"
Rectangular holes
0.75" x 1.25"
Straight centers
13.3% Open area

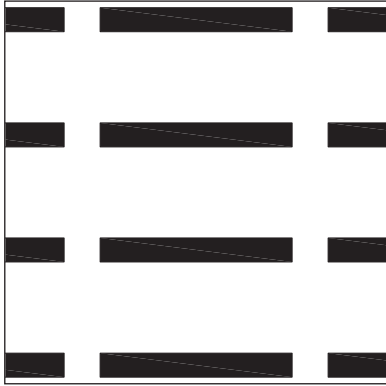


AD
125x1000X300L

0.125" x 1"
Rectangular holes
0.3" x 1.875"
Straight centers
35.1% Open area

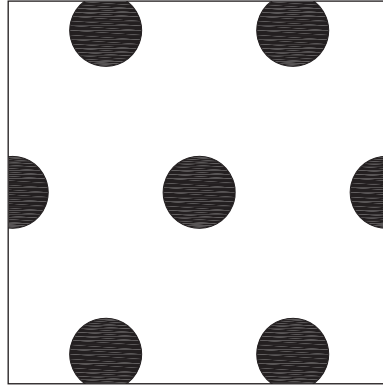
Your Perforations Selection, continued:

Premium



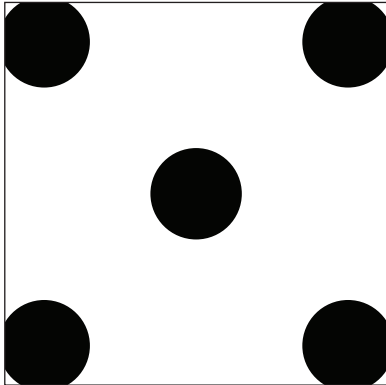
AE
125x1000X600L

0.125" x 1"
Rectangular holes
0.6" x 1.1875"
Straight centers
17.5% Open area



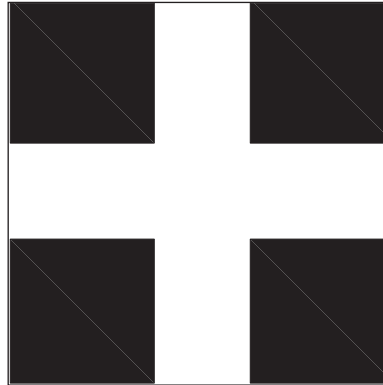
AF
375R974S

0.375" Diameter holes
0.974" Staggered centers
13.4% Open area



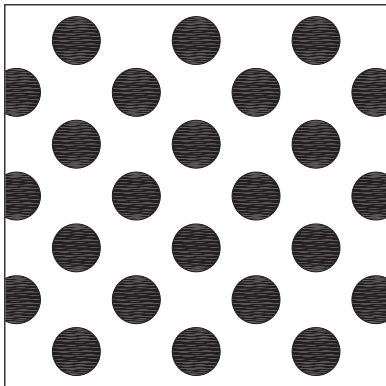
AG
312R750D

0.312" Diameter holes
0.75" Diagonal centers
13.6% Open area



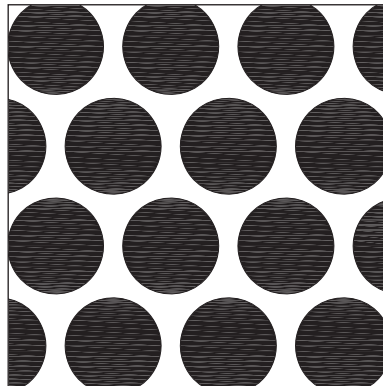
AH
750S1250L

0.75" Square holes
1.25" Straight centers
36% Open area



AI
250R413S

0.25" Diameter holes
0.413" (41°)
Staggered centers
28% Open area

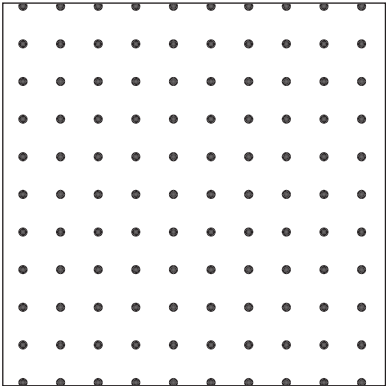


AJ
500R600S

0.5" Diameter holes
0.6" Staggered centers
63% Open area

Your Perforations Selection, continued:

Premium



**AK
48R196L**

- 0.048" Diameter holes
- 0.196" Diagonal centers
- 4.71% Open area

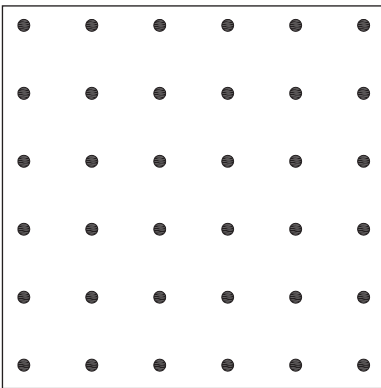
Curved Metal Systems, continued



Rockfon® Curvgrid™
(EZ-flex®)

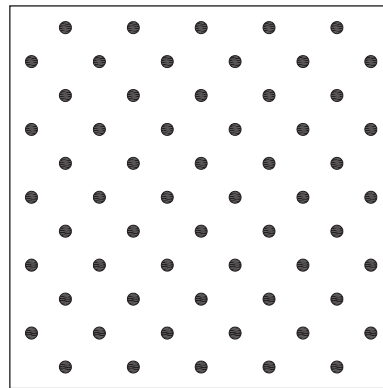
Your Perforations Selection:

Standard



AA
62R354L

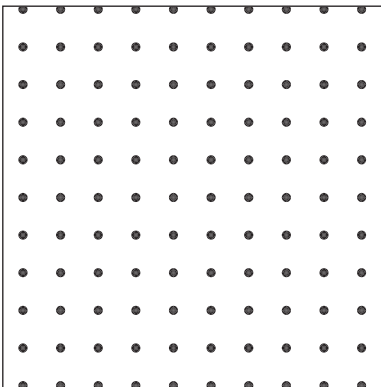
0.0625" Diameter holes
0.354" Straight centers
2.5% Open area



V
62R250D

0.0625" Diameter holes
0.25" Diagonal centers
4.9% Open area

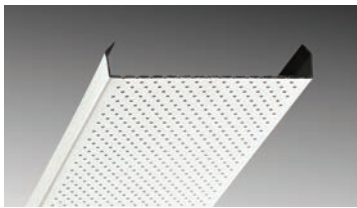
Premium



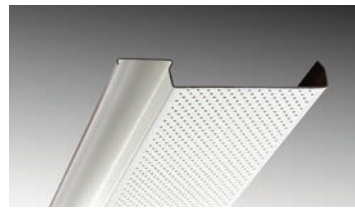
AK
48R196L

0.048" Diameter holes
0.196" Diagonal centers
4.71% Open area

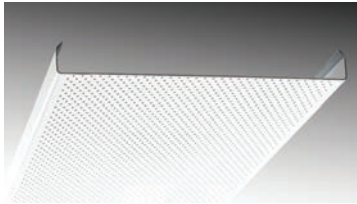
Linear Metal Panels



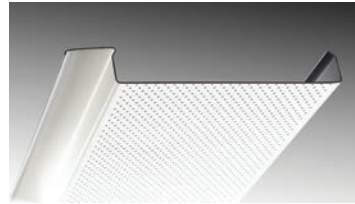
Rockfon® Planar®



Rockfon® Planar® Plus



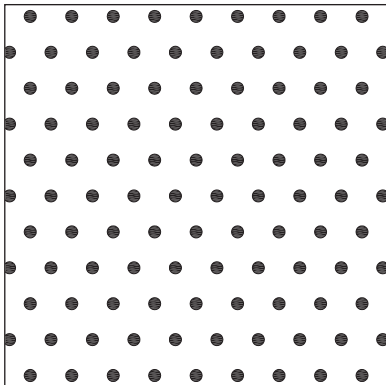
Rockfon® Planar® Macro



Rockfon® Planar® Macroplus®

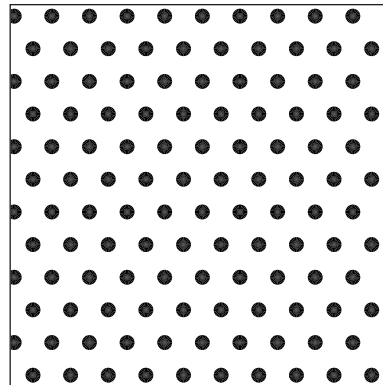
Your Perforations Selection:

Standard



T
62R216S

0.0625" Diameter holes
0.216" Staggered centers
7.6% Open area



AL
78R196S

0.078" Diameter holes
0.196" Staggered centers
15% Open area



Rockfon® is a registered trademark
of the ROCKWOOL Group.

2018 | Subject to alterations in range and product technology without prior notice. Rockfon accepts no responsibility for printing errors.
© ROCKWOOL International A/S 2018. All rights reserved. ® denotes a trademark that is registered in the United States of America.

012219

Rockfon

4849 S. Austin Ave.
Chicago, IL 60638 USA

Tel. +1-800-323-7164
Fax. +1-800-222-3744
www.rockfon.com
360003007

