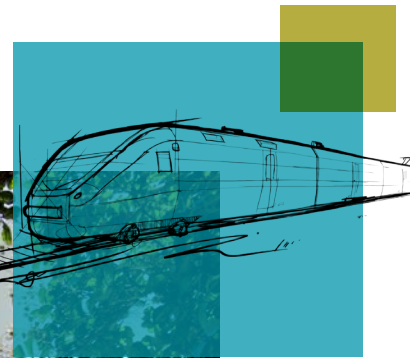


# MARTA revitalizes station's design with Rockfon metal ceilings

MARTA Inman Park/ Reynoldstown Station  
Atlanta, GA



The Metropolitan Atlanta Rapid Transit Authority (MARTA) Inman Park/ Reynoldstown station, located on DeKalb Ave. and Hurt St. in Atlanta, serves approximately 3,000 people every day. When the neighborhood station originally opened in 1979, its pedestrian bridges and walkways featured Chicago Metallic® metal ceiling systems. After 40 years of continuous use, the station was ready for an update. Based on the ceiling's reliable performance, MARTA once again selected Rockfon's metal ceiling systems as the basis of design for the station's renovation.

## Products in use

- Rockfon® Planar® Macroplus®
- Rockfon® Planostile™ Snap-in
- Rockfon® Infinity™

## Lasting Performance

MARTA provided architectural direction on the 25,000-square-foot station's \$6.9 million rehabilitation, renovation, enhancement and expansion project. MARTA worked closely with Reeves Young as the general contractor and Acousti Engineering Company as the ceiling installing contractor. Rockfon's Technical Services team provided additional support, helping MARTA with design fulfillment and Acousti with the custom fabrication and installation logistics.

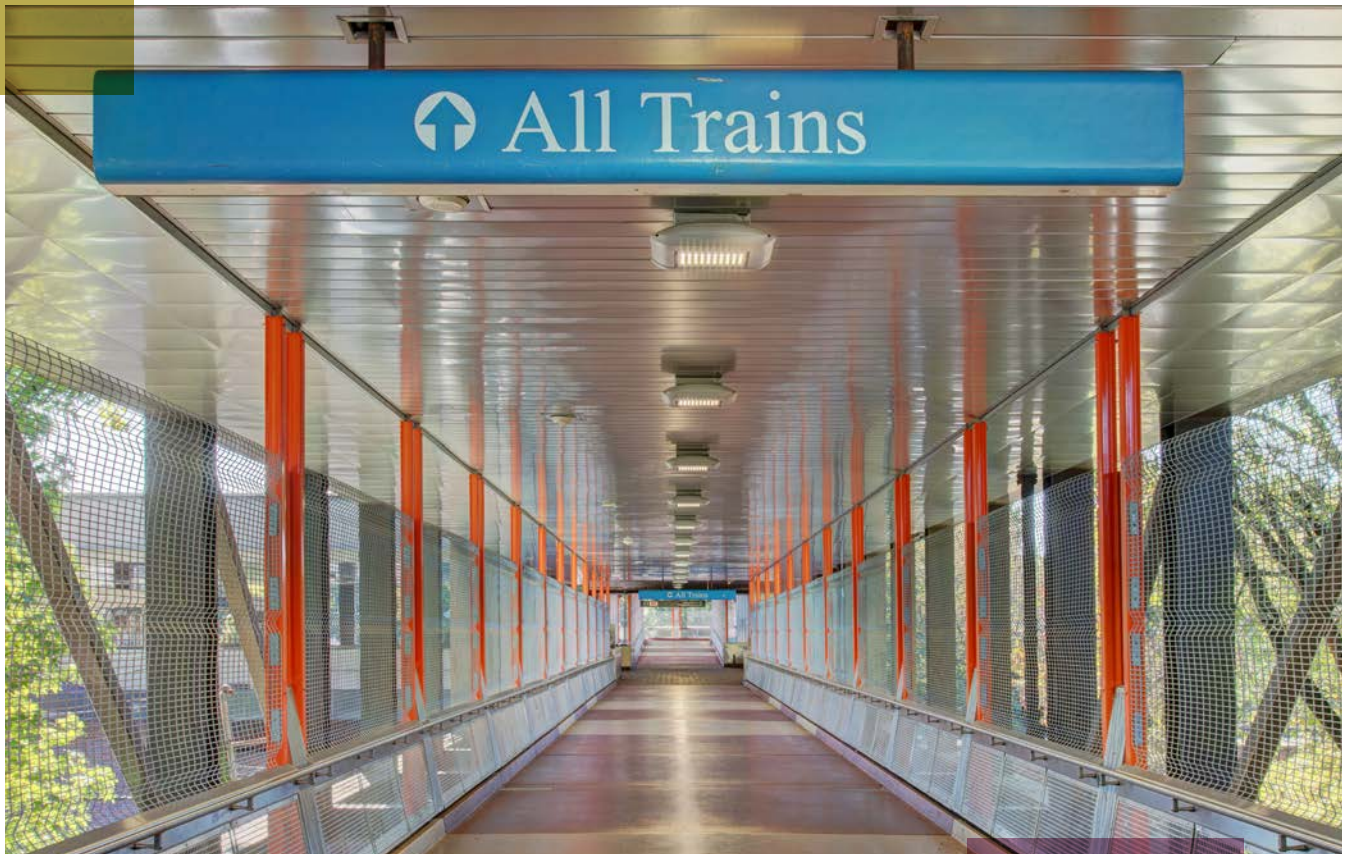
"There was a lot of collaboration on the front end to ensure we retained MARTA's design intent," said Carlo Grohovac, Rockfon's architectural and district sales manager for Georgia, "We sat down together a year in advance of the on-site renovation work. I said, 'Tell me what you want and we'll do our best to make it happen.' What they wanted was to meet the performance requirements, dress up the look, while keeping the costs down."

After evaluating the Inman Park/Reynoldstown station for structural integrity, the original Chicago Metallic ceiling suspension systems received approval to remain in place with additional reinforcing.

"Acousti's structural reinforcement and down bracing should allow the ceiling suspension system to outperform almost any imaginable future need. It's very impressive," praised Grohovac. Wind load tests also confirmed Rockfon's metal ceiling systems meet the frequent pressure peaks caused by the MARTA and CSX trains' arrivals and departures.

Because the metal ceiling system extends across both exterior and interior spaces, it also was tested to meet the project's air and water performance requirements for Atlanta's warm, humid climate.

Metal does not absorb moisture and does not support the growth of mold, mildew or other potentially harmful microorganisms. Rockfon's metal ceilings are low maintenance and fully recyclable at the end of their use on the station.



## Improved Appearance

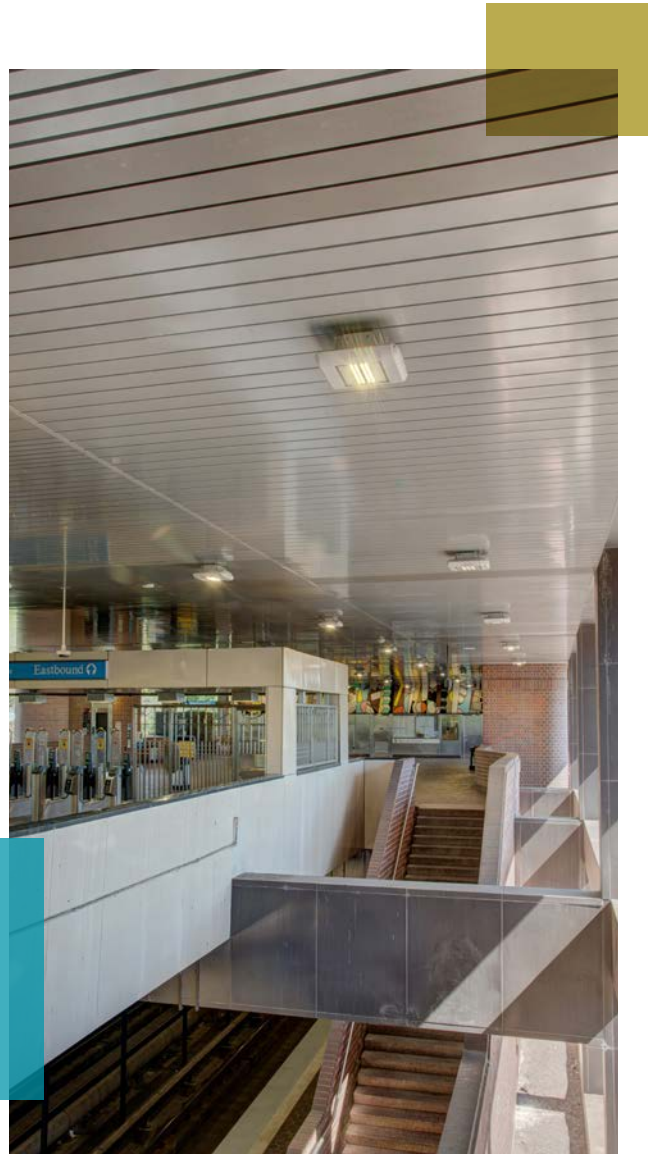
To improve the station's aging appearance, Acousti removed and recycled the old metal ceiling panels, and installed the new systems: Rockfon® Planar® Macroplus® linear metal planks in 4-, 6- and 8-inch widths; Rockfon® Planostile™ Snap-in metal ceiling panels in 18-by-24-, 24-by-24- and 10-by-10-inch dimensions; and Rockfon® Infinity™ perimeter trim in 4- and 12-inch heights.

"Using two systems, factory-finished in Satin Silver and Winchester Gray, perforated and non-perforated panels and multiple sizes, we were able to combine standard design elements for a high-end look without a high-end cost," said Grohovac. "The variety of color, sizes and shapes helps break up the long corridors and offer visual cues to passengers."

**"The variety of color, sizes and shapes helps break up the long corridors and offer visual cues to passengers." said Carlo Grohovac**

He continued, "MARTA wanted a smooth, symmetrical look throughout the transitions and perimeters, such as where the ceiling has a 45-degree angle, or where it meets a column or soffit, or where all three conditions intersect. We arrived at elegantly simple solutions and they look beautiful."

Rockfon custom-engineered and fabricated the ceiling's secure access panels and technical panel attachments using pre-cut panels and channel molding. "These attachments uniquely highlight our attention to even the smallest detail within the big picture of this project," noted Grohovac. "They smoothly incorporate the adjacent ceiling materials, often in two colors, and seamlessly frame the fixtures for the new fire protection system, security cameras and LED lighting."



## Positive Impact

Rockfon's ceiling systems enhance the station's performance, appearance and sustainability, and the integral fixtures support MARTA's safety and energy efficiency goals.

Rockfon's ceiling systems enhance the station's performance, appearance and sustainability, and the integral fixtures support MARTA's safety and energy efficiency goals.

According to MARTA's 2018 Sustainability Report, public transit alternatives helps keep more than 630,000 metric tons of carbon dioxide or equivalent greenhouse gases out of Atlanta's atmosphere every year. This is similar to keeping 136,000 gas-powered single occupancy passenger vehicles off of the road. The reduced traffic congestion, air pollution and fossil fuel consumption also results in increased safety, productivity and wellness for commuters using public transit.

Minimizing disruption to the passengers at MARTA's Inman Park/ Reynoldstown station, Acousti carefully managed its work while the station remained in use throughout the renovation. Work began in December 2018 and was completed on time and within budget for the April 2019 re-opening celebration at the Inman Park Festival.

The Inman Park/Reynoldstown station was the first major project to be funded by the "More MARTA Atlanta" (now MARTA 2040) plan, representing the region's largest transit investment in more than four decades. Approximately \$2.7 billion of the funding was generated by a half-penny sales tax approved by city voters in 2016. According to the American Public Transportation Association, studies have shown that every \$1 invested in public transportation generates a \$4 economic return to a community.



# Community Benefits

The More MARTA Atlanta plan was designed to improve transit services in historically underserved communities, increasing access to employment centers throughout the city of Atlanta. After two years of public engagement, technical analysis, system planning and project list refinement, the MARTA Board of Directors approved the More MARTA Atlanta program on Oct. 4, 2018.

“In Atlanta in the 21st century, transit is the lifeblood of opportunity,” said (2018) board chair Robert L. Ashe following the program’s approval. “It is how millions of Atlantans access jobs, school, health care and move throughout their communities. Today, we together took an important step in building the Atlanta we want for decades to come.”

**“Today, we together took an important step in building the Atlanta we want for decades to come.” said (2018) board chair Robert L. Ashe**

Along with aesthetic updates to the Inman Park/Reynoldstown station, its new safety features include an accessibility ramp connecting Walthall Street to the Reynoldstown bus loop and a stair tower to Seaboard Avenue on the south side of the station. The station is the closest train station to Little 5 Point’s restaurant and retailers, and is near the Edgewood Retail District, the Krog Street Market, the BeltLine Eastside Trail, the PATH Stone Mountain Trail, historic sites and more.

Atlanta’s investment in MARTA’s transit services and stations not only ushered in improved connectivity, accessibility and mobility, but also heralded significant economic development opportunities across the city – and the region – in the years ahead. The Atlanta Regional Commission forecasted that by 2040, the region will see an influx of 2.5 million new residents, making Atlanta the sixth-largest metro area in the country.



Find out more by visiting [rockfon.com](http://rockfon.com)

Rockfon® is a registered trademark of the ROCKWOOL Group.

Subject to alterations in range and product technology without prior notice. Rockfon accepts no responsibility for printing errors.  
© ROCKWOOL International A/S 2018. All rights reserved. ® denotes a trademark that is registered in the United States of America.  
Photographer: Terry Wieckert; Abstract Photography, Inc.