

## Chicago Metallic<sup>®</sup> Spanfast<sup>®</sup> Drywall Grid

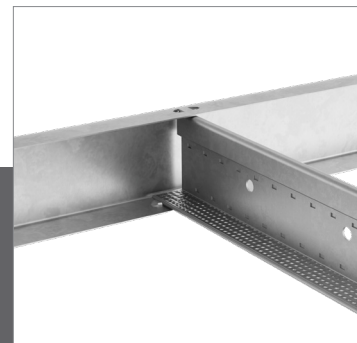
### Features and Benefits

- Drywall Grid System which reduces the need for hanger wires at spans of 9' or less
- Minimizes labor and material costs
- Heavy Duty drywall grid construction increases strength and decreases rollover during installation
- Convenient, pre-notched wall track eliminates on-site field measuring for installation of Spanfast tees.
- Chicago Metallic suspension systems meet Class-A flame spread in accordance with ASTM standard E84

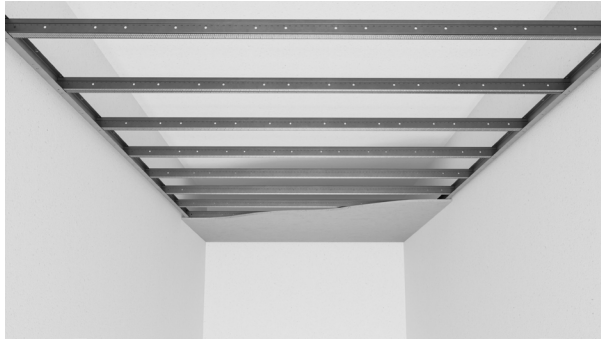
### Applications

- Corridors
- Condos
- Hotels, Motels, Suites, Dorms
- Apartments
- Restrooms
- Townhomes
- Multi-Housing

### Drywall Ceiling Suspension System



# Chicago Metallic® Spanfast® Drywall Grid



## LEED® v4.1 Highlights

### Materials and Resources (MR)

- Waste Management Planning ✓
- Interiors Life Cycle Impact Reduction ✓
- Environmental Product Declarations ✓
- Sourcing of Raw Materials ✓
- Material Ingredients -
- Waste Management ✓

### Indoor Environmental Quality (EQ)

- Low-Emitting Materials ✓

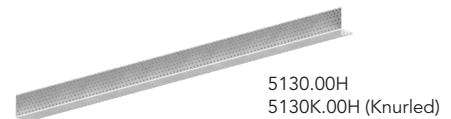
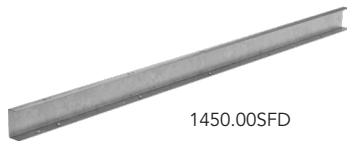
Recycled Content 30%

### Performance Properties:

<b>Base Material</b>	Hot-Dip Galvanized Steel (HDG-40)
<b>Capping</b>	None - Knurled Face Hot-Dip Galvanized Steel (HDG-40)
<b>Structural Classification</b>	Heavy Duty per ASTM C635
<b>Flame Spread Rating</b>	Class A per ASTM E84
<b>Warranty</b>	40-Year Suspension System Warranty
<b>Recycled Content</b>	30%

## Spanfast Tees

Detail	Catalog Number	Product Number	Face Dimension	Length	Height	Structural Classification (ASTM C635)	Seismic	Packaging			Ctn/ Pallet
								Pcs/ Ctn	LF/ Ctn	Lbs/ Ctn	
	<b>Main Runner</b>										
	640.SF.72D	343353	1-1/2"	6'	1.80"	HD	A-F	12	72	25	42
	640.SF.96D	343354	1-1/2"	8'	1.80"	HD	A-F	12	96	33	42
	640.SF.120D	343355	1-1/2"	10'	1.80"	HD	A-F	12	120	41	42
	640.SF.144D	343356	1-1/2"	12'	1.80"	HD	A-F	12	144	49	42
	640.SF.168D	343357	1-1/2"	14'	1.80"	HD	A-F	12	168	57	42





## Wall Track

Catalog Number	Product Number	Face Dimension	Length	I.D	Top Flange	Packaging		
						Pcs/ Ctn	LF/ Ctn	Lbs/ Ctn
1450.00SFD	349317	1"	144"	1.84"	3/4"	12	120	32
5130K.00H	250058	1-1/2"	120"	1-1/2"	-	30	300	57

Note: 1450.00SFD wall channel is pre-notched 8" o.c., eliminating the need for field measuring.

# Chicago Metallic® Spanfast® Drywall Grid

## Accessories

	Detail	Product Description	Catalog Number	Rockfon Part Number	Packaging	
					Pcs/ Ctn	Lbs/ Ctn
Access Door Kits (GRG)		9"x 9" GRG Access Door and Frame	8501.00	250377	1	5
		12"x 12" GRG Access Door and Frame	8502.00	310081	1	6
		18"x 18" GRG Access Door and Frame	8503.00	310082	1	10
		24"x 24" GRG Access Door and Frame	8504.00	313253	1	13
		30"x 30" GRG Access Door and Frame	8505.00	313256	1	22
Other Accessories		90-Degree Horizontal Clip	479.00	253183	25	5

## Performance

### Allowable Load Test Data

#### Based on L/240 Span Deflection with No Lateral Bracing (Lb/Ft2)

Spanfast Tee	Spacing	Allowable Load (lb/sf) With No Lateral Bracing at L/240 (per ASTM C645)									
		Without Mid-Span Support					With Mid-Span Support				
		4'	5'	6'	7'	8'	8'-6"	9'	10'	12'	14'
640.SF	8"	48.1	27.1	15.4	9.8	6.8	5.6	5.1	27.1	15.4	9.8
	16"	24.1	13.6	7.7	4.9	3.4	2.8	2.6	13.6	7.7	4.9
	24"	16.0	9.0	5.1	3.3	2.3	1.9	1.7	9.0	5.1	3.3

Spans greater than 9' require mid-span support (refer to installation guide for more information). Hanger wires are eliminated in many applications and are reduced vs. standard drywall grid at spans greater than 9', minimizing labor and material cost.

Standard Weights (approx):  
 1/2" drywall - 2.0 lbs per SF  
 5/8" drywall - 2.5 lbs per SF  
 2 layers of 5/8" drywall - 5.0 lbs per SF

Note: Weights are provided for reference only, customer responsible for confirming applied load weights.

## Material

ASTM C 635 Heavy Duty (HD) furring runner classification;  
 commercial quality 0.18 steel, G40 hot-dip galvanized body  
 and knurled face cap, 1-1/2" width, 1.80" height.

Note: A metallurgist should be consulted regarding the suitability of this product for the environmental conditions in which it is being installed.

062024

**Rockfon**

4849 S. Austin Ave.  
Chicago, IL 60638 USA

Tel. +1-800-323-7164

[cs@rockfon.com](mailto:cs@rockfon.com)

[rockfon.com](http://rockfon.com)

2024 | Subject to alterations in range and product technology  
without prior notice. Rockfon accepts no responsibility for printing errors.  
© ROCKWOOL A/S 2022. All rights reserved.  
® denotes a trademark that is registered in the United States of America.