

Rockfon® Industrial™ Black

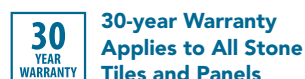
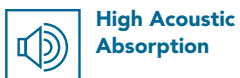
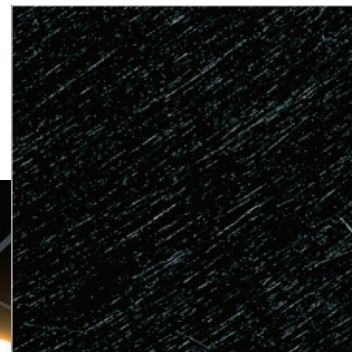


Features & Benefits

- Specifically designed for industrial applications, ensuring suitability for demanding environments
- Excellent sound absorption with an NRC of 1.05
- Class A fire performance
- Inherently resistant to mold and mildew with no added antimicrobial
- Compliant with the Build America, Buy America Act (BABAA)

Applications

- Light Industry
- Heavy Industry



Rockfon® Industrial™ Black

LEED® v4.1 Highlights

Materials and Resources (MR)

- Waste Management Planning -
- Interiors Life Cycle Impact Reduction ✓
- Environmental Product Declarations ✓
- Sourcing of Raw Materials ✓
- Material Ingredients ✓
- Waste Management -

Indoor Environmental Quality (EQ)

- Low-Emitting Materials ✓
- Interior Lighting ✓
- Acoustic Performance ✓

Recycled Content: 53%*

High Performance Factors

Base Material Stone Wool

Surface Smooth

Fire Class A

Performance Tested to US Standard ASTM E84: Flame Spread Index: 5
Smoke Developed Index: 0
Canadian Standard CAN/ULC S102: Flame Spread Index: 15
Smoke Developed Index: 5

Warranty 30-Year Tile Warranty

Mold & Mildew Resistance Inherently Resistant
(applies to stone wool substrate and tile surfaces)
Tested to ASTM D3273: 10
(Scale of 0 to 10, 10 being highest performing)
Tested to ASTM C1338: Pass
(Pass or Fail, Stone Wool Tiles Pass)

Sag Resistance Won't Sag or Warp Even in 100% Relative Humidity
Tested to ASTM C367

Low VOC UL GREENGUARD Gold Certified



Standard Panels

Edge Designation	Item Number	Modular Size (nominal)	NRC	Fire Class	Mold & Mildew Resistance	Sag Resistance (relative humidity)	Light Reflectance	Cleanroom Class	Embodied Carbon		Low VOC	Packaging Information	
									Per 1m ² (kg CO ₂ - eq)	Per 1ft ² (kg CO ₂ - eq)		lbs/sqft	sqft/carton
 SQ Square Lay-In	6300	2' x 4' x 2"	1.05	A	✓	up to 100%	0.04	ISO 5	3.89	0.361	✓	0.8	32

*Recycled content values for our stone wool tiles and panels are based on 2021 production averages of a standard 2' x 2' tile and their primary production location.

Scan for Full Accessories Guide



Product Compatibility

15/16" Suspension Systems
200, 1200 and Fire Rated systems
 SQ Square Lay-in

Rockfon® Industrial™ Black

Material

Stone wool (Mineral Wool) ceiling tiles with factory painted glass scrim surface.



ASTM E1264 Classification

ASTM E1264 (2022): Type IV, Form 3, Pattern G
ASTM E1264 (2023): Type A, Form A2.3, Pattern G



Fire Performance

Stone wool ceiling tiles achieve Class A fire requirements and are tested for Surface Burning Characteristics to ASTM E84 for the US and CAN/ULC S102 for Canada.

Rockfon® Industrial™ Black Surface burning characteristics:
UL723 (ASTM E84): Flame Spread Index: 5
Smoke Developed Index: 0
CAN/ULC S102: Flame Spread Index: 15
Smoke Developed Index: 5



Mold and Mildew Resistance

Rockfon® Industrial Black™ stone wool substrate and tile surfaces are inherently resistant to mold and mildew and are tested to ASTM D3273 (Standard Test Method for Resistance to Growth of Mold on the Surface of Interior Coatings) and ASTM C1338 (Standard Test Method for Determining Fungi Growth Resistance of Insulation Materials and Facings).



Humidity Resistance

Stone wool ceiling tiles are inherently resistant and are tested to ASTM C367 (Standard Test Methods for Strength Properties of Prefabricated Architectural Acoustical Tile or Lay-In Ceiling Panels) and won't sag or warp even in 100% relative humidity.



Cleaning

✓ Vacuum



Sustainability

Rockfon® Industrial™ Black tiles are UL GREENGUARD Gold certified for low VOC (chemical) emissions and meet the California Department of Public Health (CDPH) Standard Method v1.2-2017 for offices and classroom environments.

Selected potential applications: LEED, WELL, CHPS, LBC, Green Globes, BREEAM Int. and CALGreen

- ✓ UL GREENGUARD Gold
- ✓ Environmental Product Declaration (Product-Specific, Type III)



Environment

53% recycled content. Recycled content based on U.S. manufacturing.



Embodied Carbon

Global Warming Potential (GWP) kg of CO₂-eq (per functional unit) from stages A1 - A3 for SQ Edge:
3.89 kg CO₂-eq (per 1m²*) / 0.361 kg CO₂-eq (per 1f²*)



Thermal Resistance

R 6.93 hr.ft².°F/Btu for 2 inch (I-P)
R 1.22 m².K/W for 50.8 mm (SI)



Tile Directionality

Rockfon® Industrial™ Black tiles are directional and must be installed according to backside arrow direction. The arrow can be turned 180°, not 90°.



Warranty

30-Year Limited Product Warranty
See rockfon.com



GREENGUARD Gold Certified
for Office and Educational
Environments



CERTIFIED Environmental
Product Declaration

Find us on

MasterSpec®

Powered by Deltek Specpoint®

BIM/Revit objects available at:
rockfon.com/products/rockfon-industrial-black/

082724

Rockfon

4849 S. Austin Ave.
Chicago, IL 60638 USA

2023 | Subject to alterations in range and product technology without prior notice. Rockfon accepts no responsibility for printing errors.
© ROCKWOOL 2022. All rights reserved.

® denotes a trademark that is registered in the United States of America.

Tel. +1-800-323-7164

cs@rockfon.com

rockfon.com